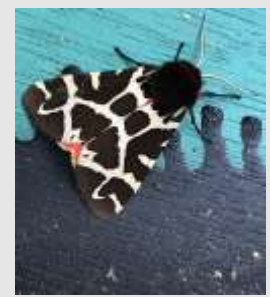




Going Wild In Bishops Castle

Peter Carty



Where is Bishops Castle

It's a bit out of the way



About Bishops Castle

Small rural market town in agricultural landscape

c2000 residents

Ransford's Timber yard

Halls Stock market

High street with local shops

6 pubs and the Three Tuns Brewery – oldest in UK

Active community

High self-reliance

3 people under 30 on Council led by active Mayor

The Poetry Pharmacy and an Emergency Poet

- Arts festival
- Carnival
- Walking festival
- Tandem triathlon
- Ale festival
- Party in the Park
- Mojo Festival
- Michaelmas fair
- Xmas lights



Why is Bishops Castle going wild?

History of Environmental and Community activity 35 years

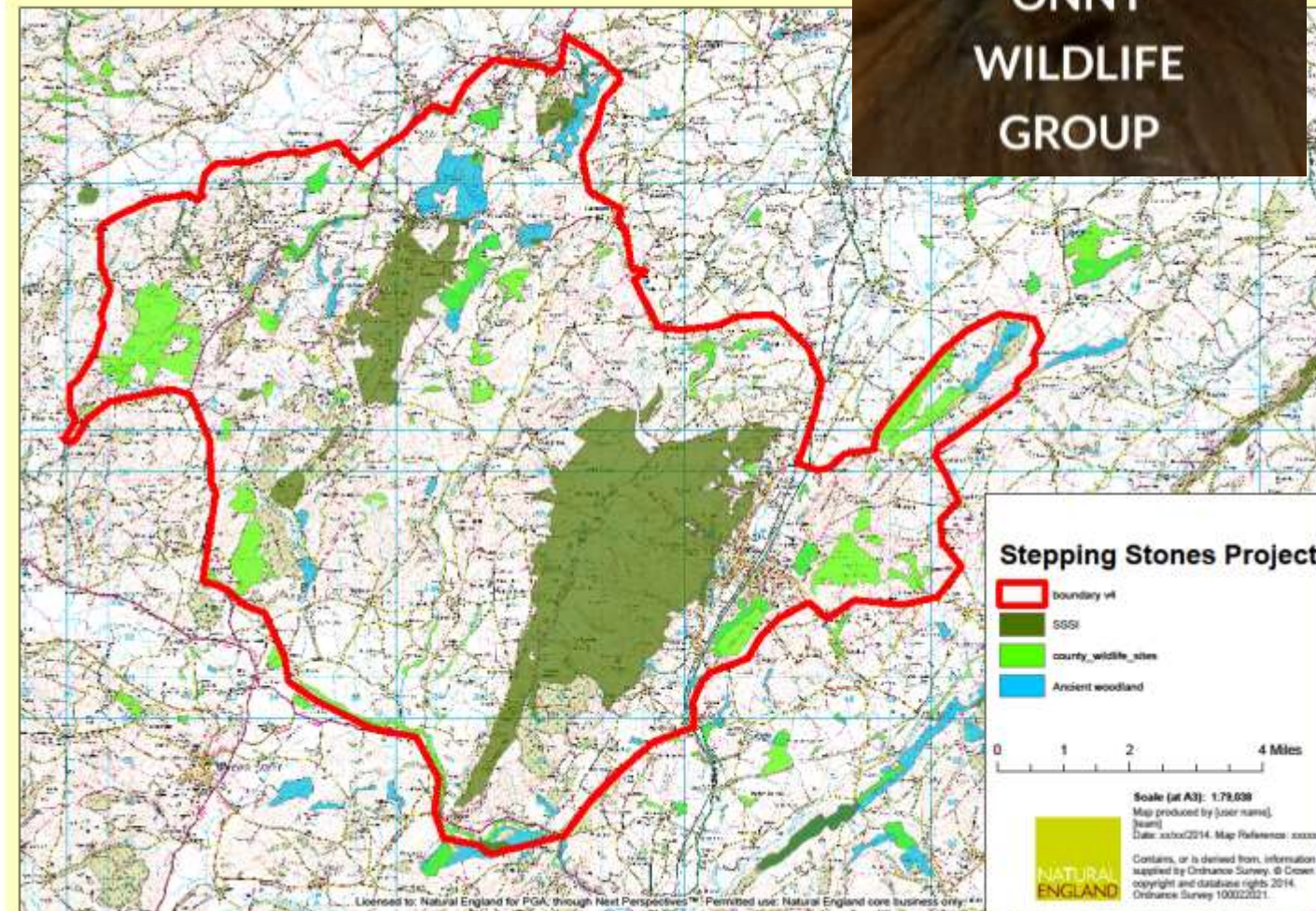
- Waste Less society 1990s
- Lightfoot
- HES
- Community Wildlife Groups

A Cluster of Wildlife specialists.

Edge of SteppingStones project NT/NE

SHAONB

Several projects in place in South Shropshire





B-lines: Building an Insect Highway

Kate Jones – Conservation Officer

www.buglife.org.uk

@buzz_dont_tweet



Daphne Du Cros

Community Food
Resilience &
The Shropshire Good
Food Partnership



RESTORING SHROPSHIRE'S VERGES PROJECT







Norbury Hill
A major steppingstone between Long Mynd and Stiperstones NNR

MMCLT is owned and managed by local people to protect, conserve and restore our environment through the stewardship of land

Cudwell meadow – a wet meadow in Church Stretton

High Leasowes meadow Church Stretton



Origin of Going Wild

BC Town Council declare a climate and Biodiversity emergency

Lightfoot write a Climate Action Plan for the Council

3 strands

Food Resilience

Carbon

Biodiversity – Nature Recovery



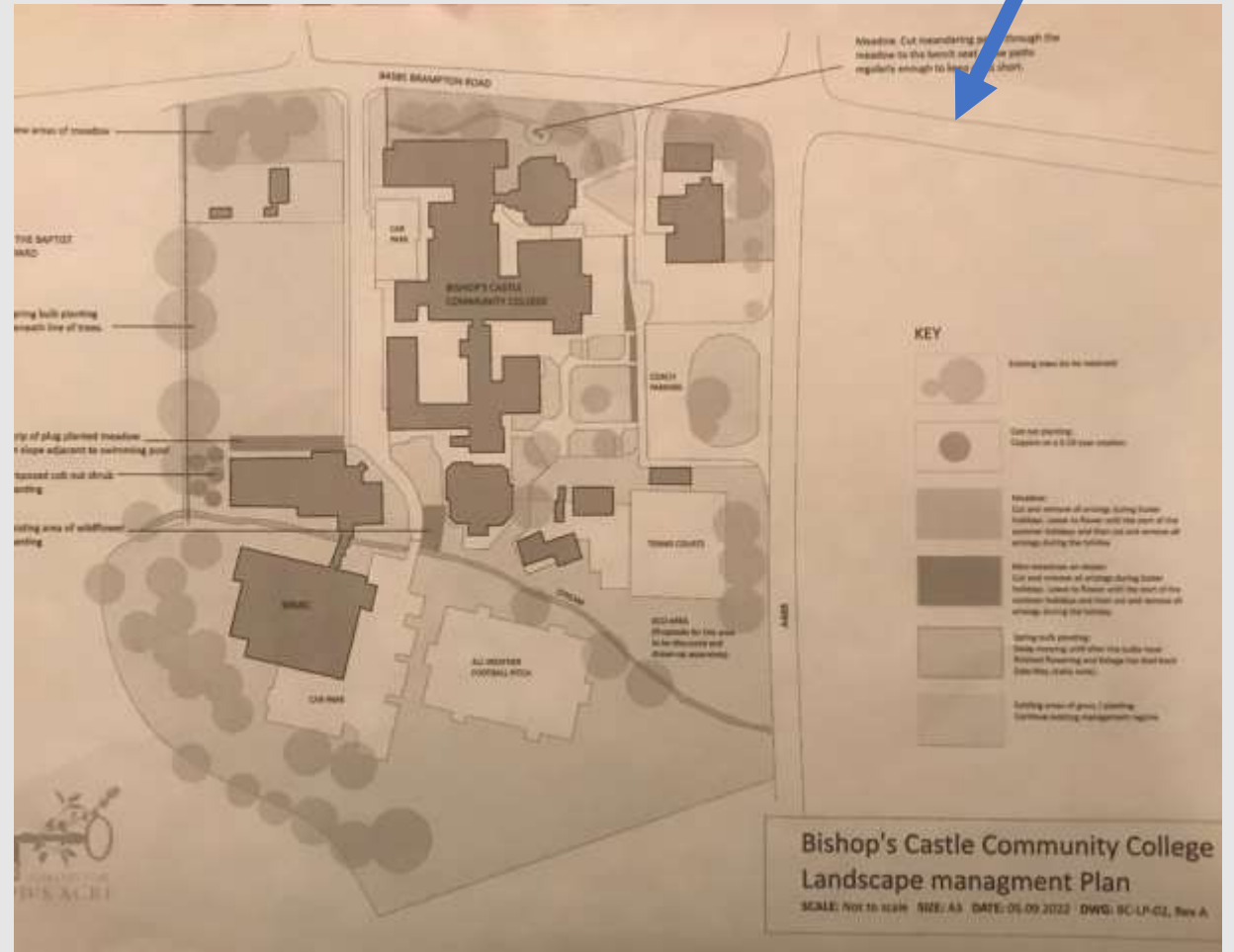
32 green spaces in Bishop's Castle

Nature Management Plan for School grounds



- KEY**
- 5 Environmental improvements carried out by Going Wild in Bishop's Castle
 - 5 Environmental improvements carried out by others
 - 5 Other green sites within the town centre

GOING WILD IN BISHOP'S CASTLE



Bishop's Castle Community College Landscape management Plan

SCALE: Not to scale SIZE: A3 DATE: 06-09-2022 DWG: BC-LP-G2, Rev A



No Mow May

Fox and Cubs

White clover

Birds foot trefoil

Bee re-fuelling station

Pams Meadow



Late
April

July



Autumn



Bishops Castle loves its swifts

Up to 100 swifts perform aerial displays over the town

May to August

Pru Dakins swift box

1 of 40 boxes in place over last 4 years



Restoring Shropshires Verges Project RSVP

Harriet raking the Long Mile

We aim to convert into a flower meadow at the entrance to Bishops Castle



Bow House verge – A489

Year 1



Year 2



Year 3



Managing perceptions

Signage



Bishops Castle, Shropshire



A489, Shropshire



Awareness raising and
sharing of knowledge

Bird Song in BC – annual event

Winter talks

September to April on local
wildlife and current projects



Going Wild In BC

Living With Swifts



Thurs 13th April
7.30 pm
(Doors 7:00pm)
Carol Wood
Town Hall, Bishops Castle

Going Wild In BC's 'Winter Talk Series'

Butterflies and Moths of Shropshire's Commons

Launching Shropshire Upland Commons Butterfly and Moth Festival 2022, come along and find out more about the moths and Butterflies in our local area!

Thursday April 7th

Bishops Castle Town Hall

Talk starts 7:30pm
(Doors open from 7:00pm)

Free Entry
(Donations welcome)

Bar Open!



Going Wild In BC's Children's Walk

Saturday October 22nd
The Wintles

10am - 12:00pm

Clothing and footwear appropriate for weather on the day.
Age range 5-10 years

Meet by the footpath finger post on the bend of the Wintles spine road.
Leaders Cath Murphy, Glynn Roberts.
(Experienced leaders and retired teachers)

Book a place or for further info call or text Glynn on 01588 266345



Going Wild In BC's Fantastic Fungi!

Thursday October 13th

Bishops Castle Town Hall

7:30pm

Free Entry
(Donations welcome)



A quick pictorial tour of some of the many beautiful and extraordinary fungi that grow in and around Bishops Castle



IN SEARCH OF CHARTER OAKS

12th & 16th JULY
WED 12TH 7.30PM PUBLIC HALL
SUN 16TH 2PM TOWN HALL

A walk (approx 1.5 hours) led by Catherine Murphy taking a look at living trees that were growing at the time the town of Bishop's Castle was granted the Charter of 1573

- * STURDY FOOTWEAR & CLOTHING TO SUIT THE WEATHER ON THE DAY
- * BRING A DRINK
- * LIMITED PLACES AVAILABLE, BOOKING ESSENTIAL
- * PLEASE CONTACT THE TOWN HALL ON 01588 630023 TO RESERVE YOUR FREE PLACE



To find out more about the charter celebrations visit the Town Council website or Facebook, or email bishopscastlecharter@gmail.com

The Map started it

Residents were asked to plot on a town map positive wildlife actions

Ponds

Verges and lawns – mini meadows

Habitat box/bug hotel

Swift nest boxes

Hedgehog box

Bat boxes

Bird nest boxes

Bird feeding

Avoiding chemicals eg slug pellets



Everyone could do at least one of these

This had a big impact and collectively residents could see a sum of the parts and the gaps in habitats



Wow we have done a lot already

Easy wins in the habitat network became visible

Let's get the Kids involved

- Making a bug hotel





Summer programme of Nature activities

Nature events every week in Summer holidays was a success and much enjoyed

All for free!



Average of 9 kids attending

Monthly programme until next easter 2024

Training programme for volunteer leaders

The Toolkit

GWIBC has Nature Recovery experience and wish to share it.

“There is a need for advice to support Parish Clerks and Parish Councils to develop bespoke nature Recovery plans in line with the 2021 Environment Act.

GWIBC is packaging up its experience into a tool kit that could be shared across Shropshire, Telford & Wrekin”

Janet Cobb Edgton Parish Clerk, SALC, MMCLT, RSVP

Next Stage

- Toolkit production and circulation
- Work with schools and young people
- 18 green spaces to receive management plans
- Volunteer work parties – current demand
- Habitat improvement work parties



Takeaway message

Anyone can do a bit to put a SteppingStone for nature into the landscape

Tess let her lawn grow into a meadow for the summer and found Adders tongue fern an indicator species of old grassland





Feel free to Go
Wild where
you live



Thank you