

# Hedgerow surveys in the Stepping Stones area

Simon Cooter and Rob Rowe

Hedgerows in the countryside form a network, with many hedges linked together.

They provide both a physical home for our wildlife and connect up our landscape so animals can travel.











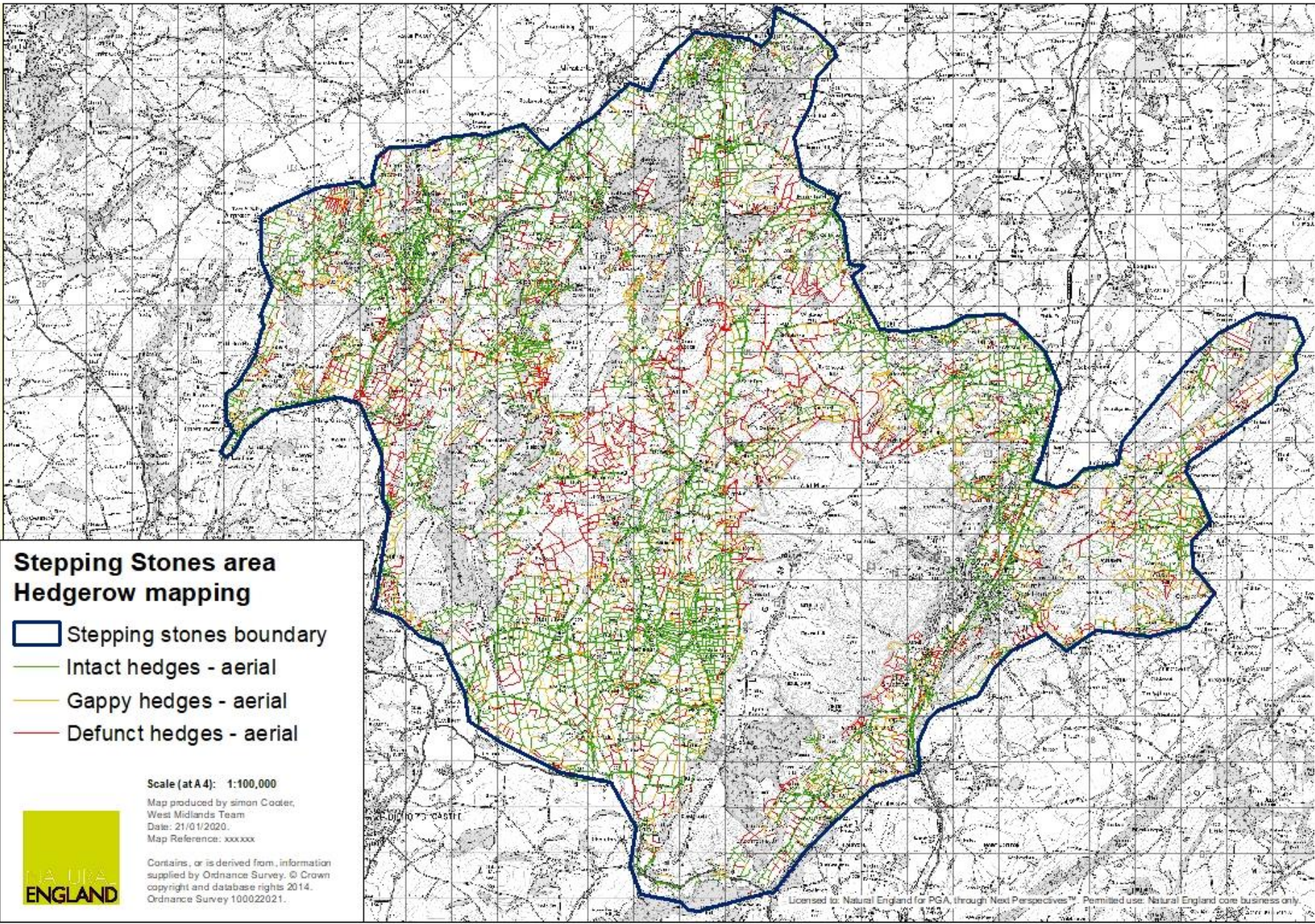


# Hedgerow mapping 2019







Using 2018 aerial  
photographic  
coverage






**Stepping Stones area  
Hedgerow mapping**

-  Stepping stones boundary
-  Intact hedges - aerial
-  Gappy hedges - aerial
-  Defunct hedges - aerial

Scale (at A4): 1:100,000  
Map produced by simon Coater,  
West Midlands Team  
Date: 21/01/2020  
Map Reference: xxxxxx

 Contains, or is derived from, information supplied by Ordnance Survey. © Crown copyright and database rights 2014. Ordnance Survey 100022021.



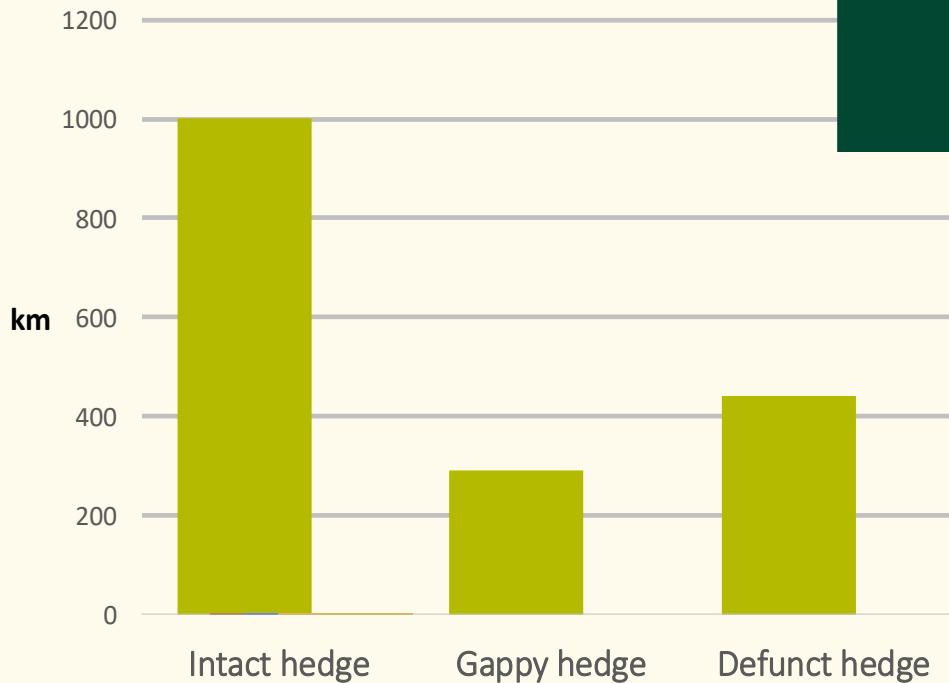
# Stepping Stones area

## Aerial hedgerow data

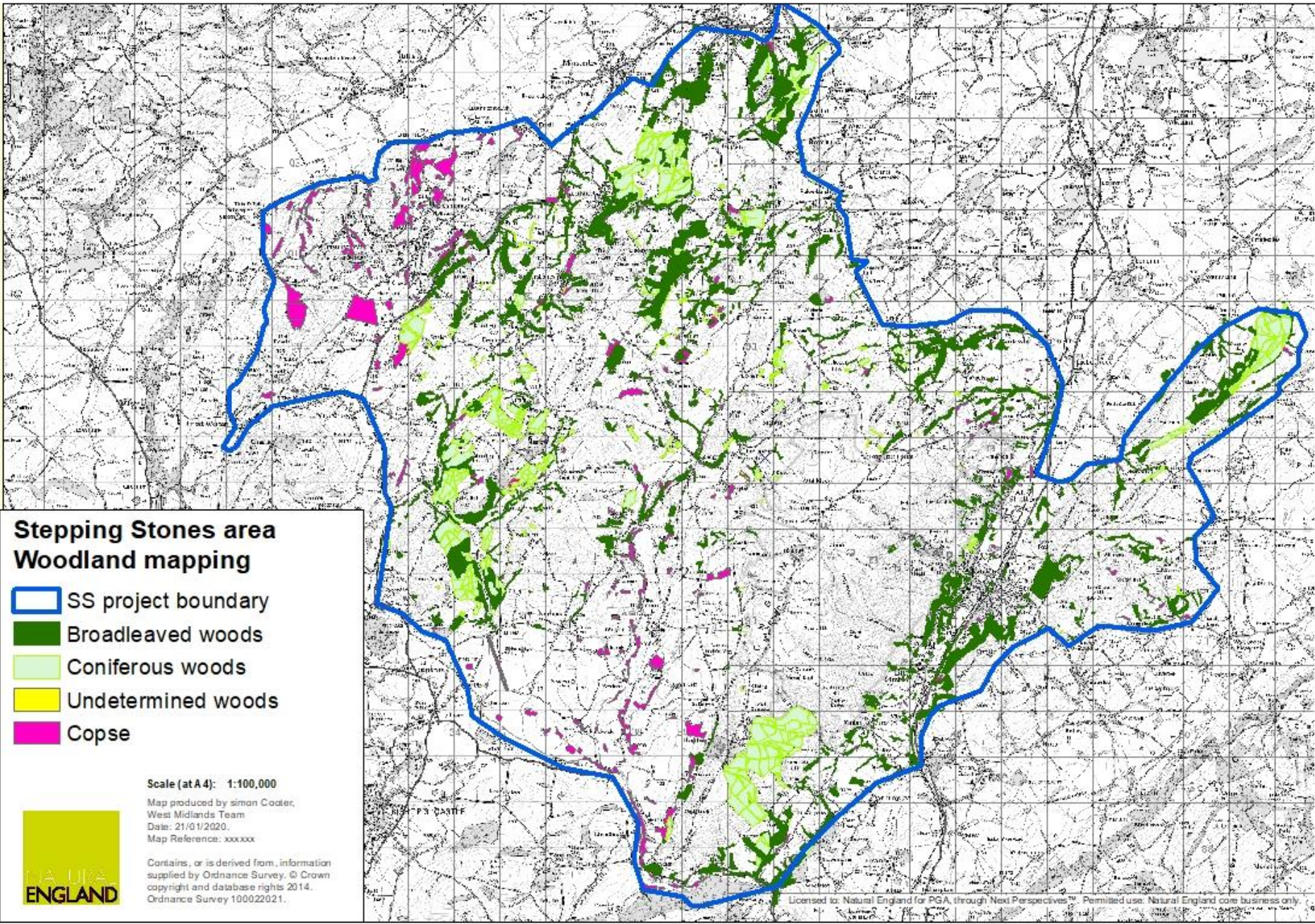
Category	Total measurements
Intact hedge	1002 km (58%)
Gappy hedge	290 km (17%)
Defunct hedge	441 km (25%)
Trees	14552
Copse	586 ha
<b>Total hedge</b>	<b>1733 km</b>

We are creeping towards losing 50% of our hedgerows in the Stepping Stones area.



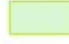


### Hedgerow classification







### Stepping Stones area Woodland mapping

-  SS project boundary
-  Broadleaved woods
-  Coniferous woods
-  Undetermined woods
-  Copse

Scale (at A4): 1:100,000

Map produced by Simon Coater,  
West Midlands Team  
Date: 21/01/2020  
Map Reference: xxxxxx



Contains, or is derived from, information  
supplied by Ordnance Survey. © Crown  
copyright and database rights 2014.  
Ordnance Survey 100022021.



# Stepping Stones area

## Woodland data

Category	Total measurements
Broadleaf woodland	1264 ha
Conifer woodland	949 ha
Undetermined young woodland	4 ha
Copse	472 ha
<b>Total woodland</b>	<b>2689 ha (12%)</b>

Stepping Stones project area: 22,634ha



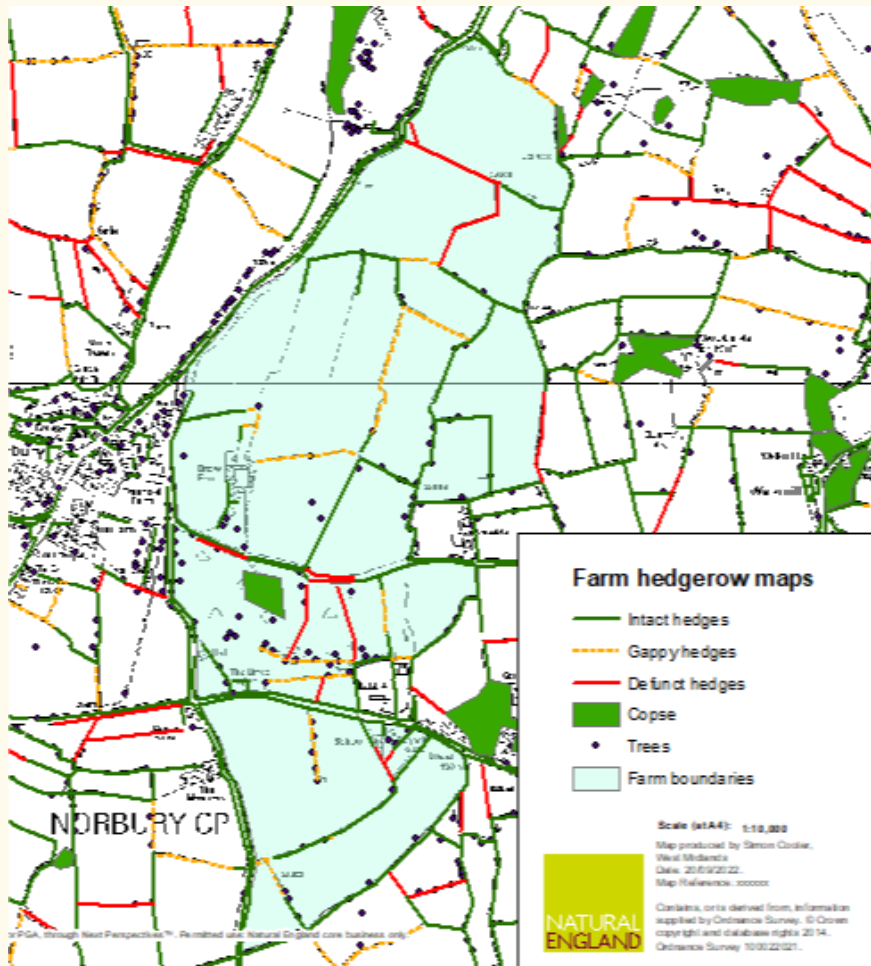
Small copses play an important part in the woodland cover of the Stepping Stones area.

Hedgerow classification

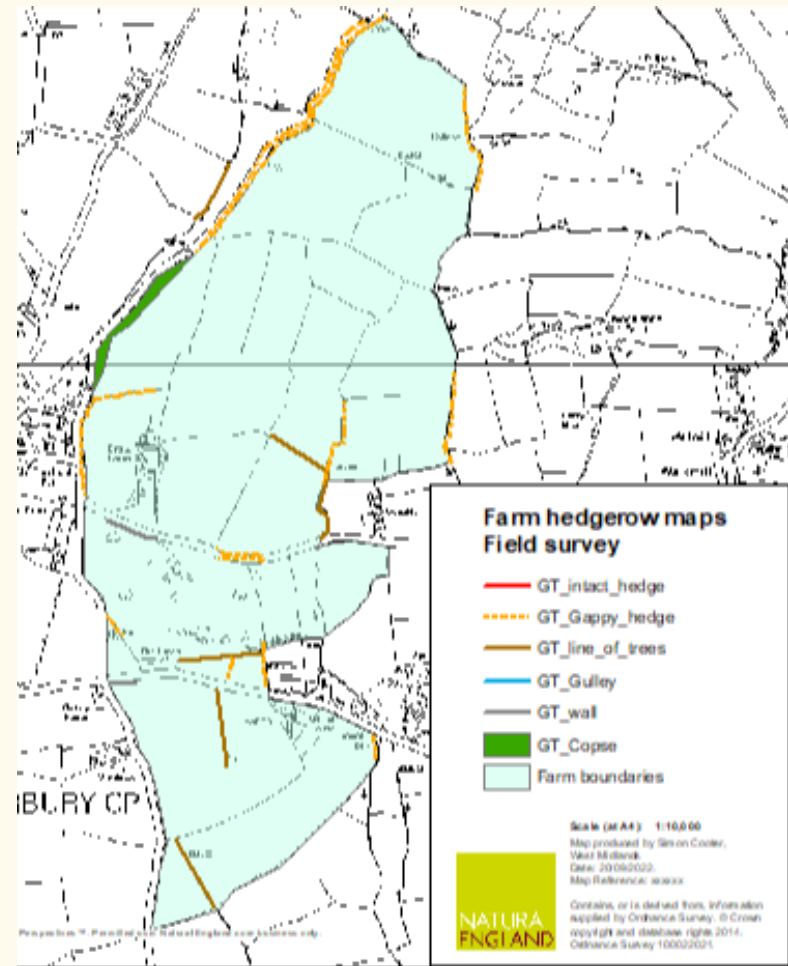




# Ground truthing the aerial data





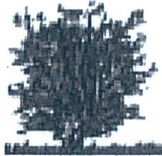




Original mapping



Ground survey changes

# Hedgerow condition monitoring

If recently planted, coppiced or laid, there is no need to do further condition assessments.

			
a) Trimmed & dense	b) Intensively managed	c) Untrimmed	d) Tall & leggy
			
e) Untrimmed, with outgrowth	f) Recently coppiced (facing view)	g) Recently laid (facing view)	h) Recently Planted















# Hedgerow condition monitoring

- A. Trimmed & dense
- B. Intensively managed
- C. Untrimmed
- D. Tall & leggy
- E. Untrimmed, outgrown
- F. Recently coppiced
- G. Recently laid
- H. Recently planted

