

# Meadows and Grasslands in the Shropshire Hills



MMCLT Regenerative Agriculture Conference

Peter Carty National Trust Countryside Manager



## Wenlock Edge

Calcareous grasslands on crest most species rich in region

Neutral Grasslands below Edge 20 years of zero inputs

Little gain in floristic diversity

Intervention required





Old limestone quarries are excellent for  
species rich grasslands





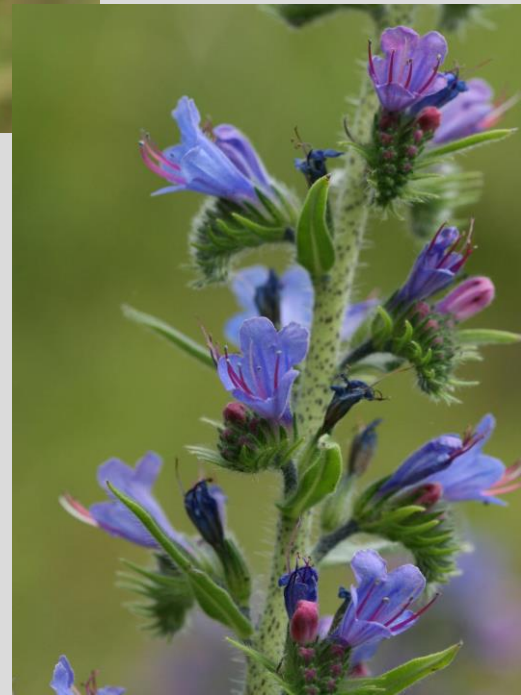








Autumn Gentian













Ragleth Meadow  
2001

















National  
Trust











Jinleye meadows  
2013



Jinleye meadow acquired 2013













































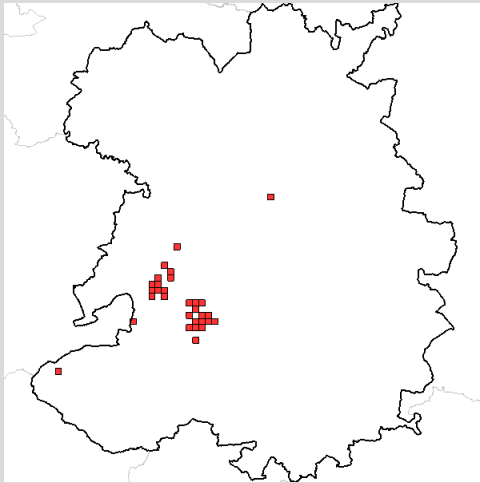








# Bilberry Bumblebee

















**MAY 2019**  
**FIR TREE FARM**





National  
Trust






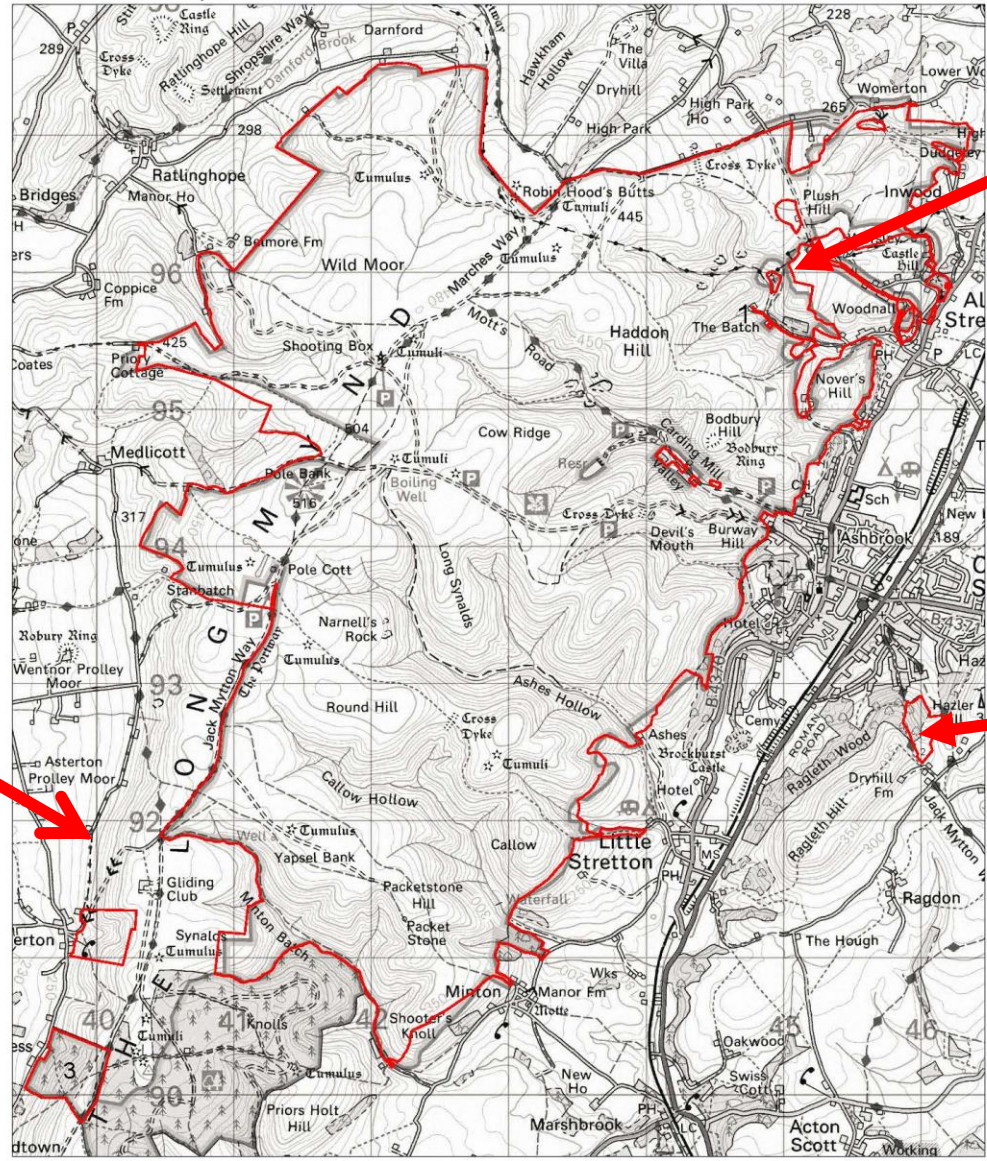
Stepping  
Stones

Creating and linking  
wildlife-friendly spaces





 <b>THE NATIONAL TRUST</b> West Midlands Region	<b>LONG MYND ESTATE</b>  National Trust Boundary	Date: Mar 2008 
	<small>Reproduced by permission of Ordnance Survey © Crown Copyright and database right 2008 All rights reserved. Ordnance Survey licence number AL100018591 The National Trust, West Midlands Regional Office, Attingham Park, Shrewsbury, Shropshire SY4 4TP</small>	



Fir Tree Farm



JINLEYE MEADOW



Ragleth meadow





Meadow

SSSI bank

Meadow













Barns farm 2022



**Stepping Stones Project**

- boundary v4
- SSSI
- county\_wildlife\_sites
- Ancient woodland

0 1 2 4 Miles

Scale (at A3): 1:79,038  
 Map produced by [user name], [team]  
 Date: xx/xx/2014. Map Reference: xxxxxx

Contains, or is derived from, information supplied by Ordnance Survey. © Crown copyright and database rights 2014. Ordnance Survey 100022021.

Licensed to: Natural England for PGA through Next Perspectives™ Permitted use. Natural England core business only



# Barns Farm from Long Mynd

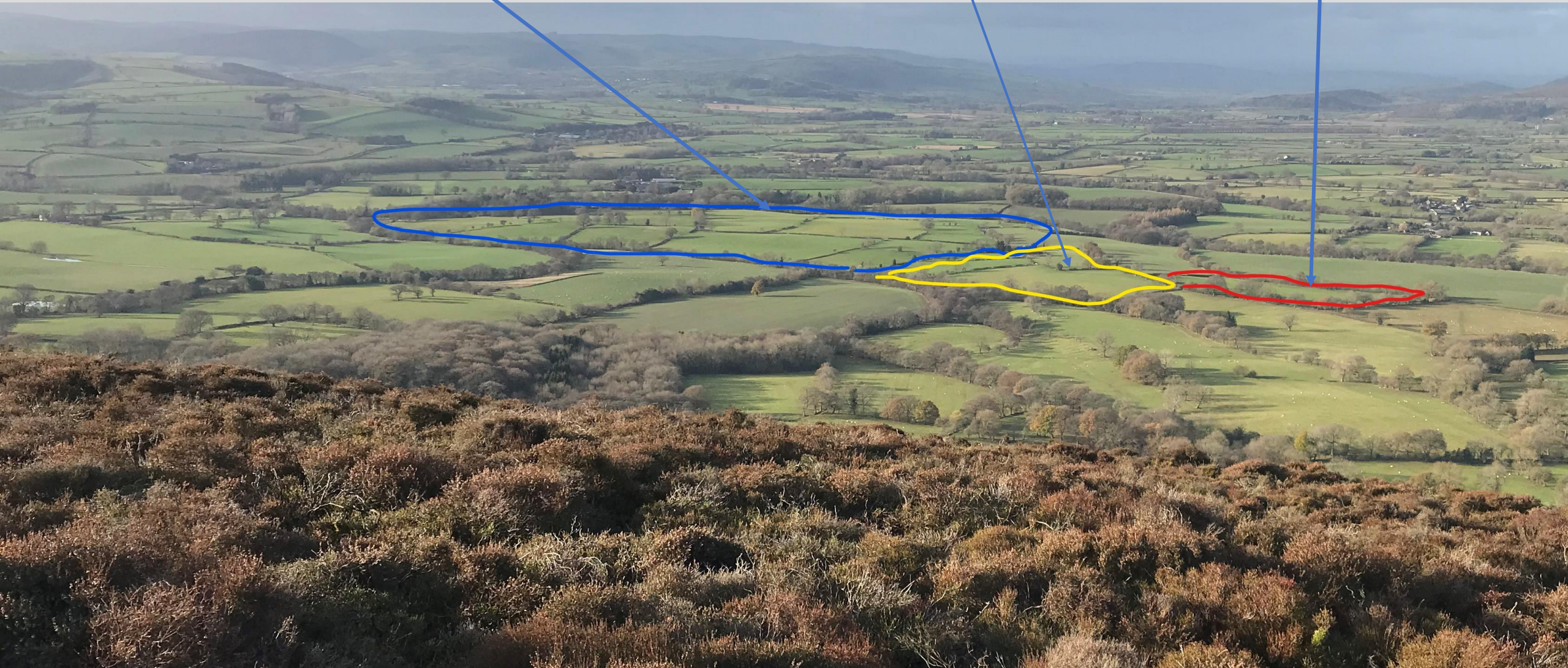
Lot 1

Barns Farm 118 acres

Lot 3

18 Acres

Lot 2









# Barns Farm

General view looking north



Veteran oak pollard

Alders and  
watercourse  
along east  
boundary





# River Onny and Crifton brook Local Wildlife site

photo taken near to Barns farm and  
an example of good riparian habitat





# Barns farm The Home Local Wildlife site

photos by Rob Rowe  
July 2021

3.26 ha species rich  
grassland

Marsh cinquefoil and  
orchids a very good site  
“ I was struck by the  
sheer number of  
butterflies” - Rob





# Potential

Hedgerow restoration, woodland corridors and wood pasture

Re-wetting pasture – removing drains





## Snipe

Breeds in wet rushy pasture  
Need wet mud in breeding  
season

75% decline in Shropshire  
1985 -2013

Rewetting pasture will help





## Curlew

56 pairs in Steppingstones project area

Needs wetland for chicks

Problems are high level of fox predation and loss or wet land







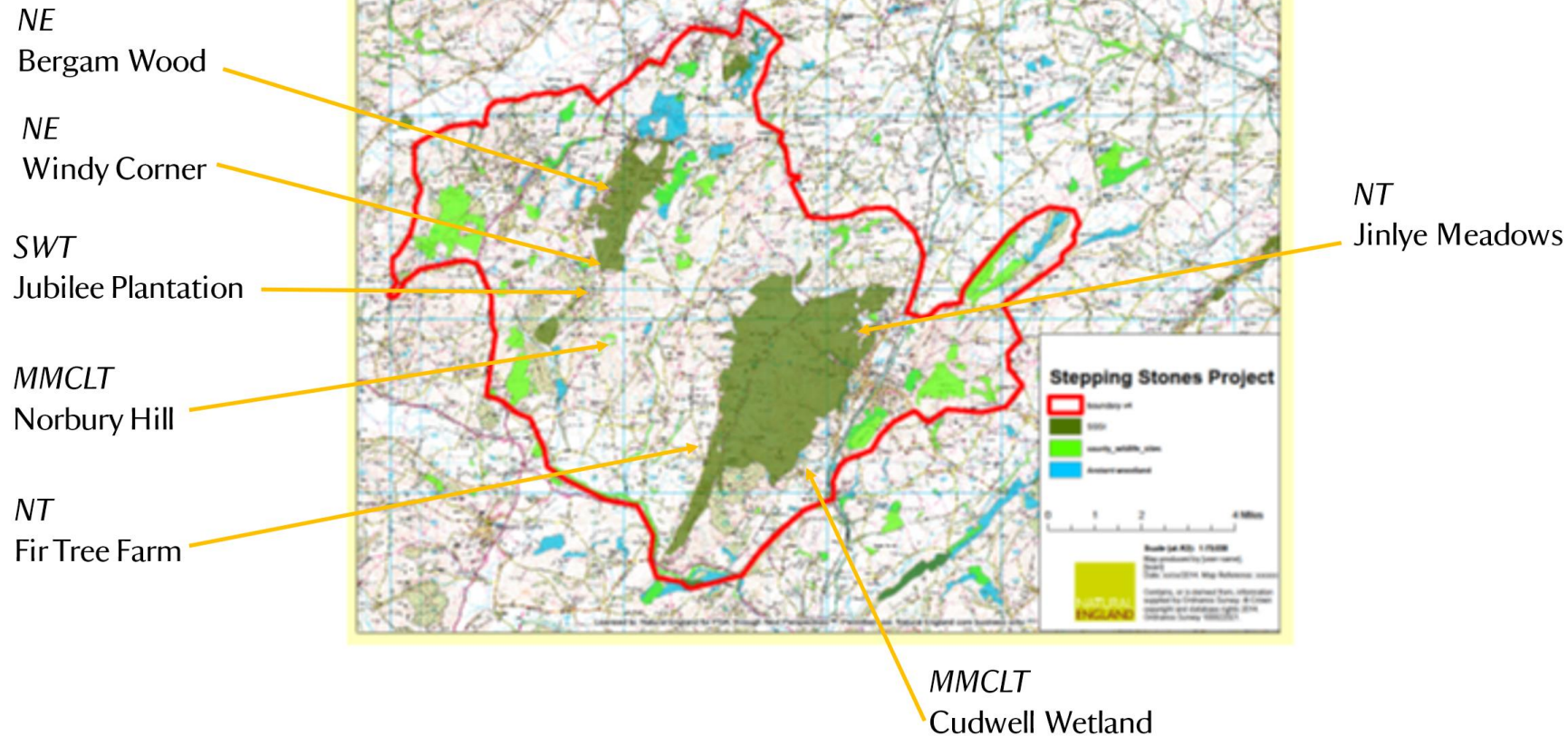
## SteppingStones Volunteer Training and surveys





## LAND ACQUISITION

- 1 NT to focus on Long Mynd and Stretton hills
- 2 SWT & NE focus is the Stiperstones ridge
- 3 County wildlife sites – need to be protected – Middle Marches CLT



## What are Wildlife Sites?

Local Wildlife Sites (LWS) are areas selected for their nature conservation value and include threatened habitats and species within a national, regional and local context, making them some of our most valuable urban and rural wildlife areas.

LWS provide refuges for most of the UK's fauna and flora and often encompass some of the most distinctive features in our landscape. However many sites are in decline along with their wildlife.



# Loss of connectivity



*“As recently as the 1940s it was still possible to walk from the Long Mynd through Ratlinghope to Shelve and Bromlow Callow over a succession of large well-grazed fields whose ancient turf was rich in flowers: heath bedstraw, bitter-vetch, bird’s-foot trefoil, Good-Friday grass, tormentil, heath milk-wort, germander speedwell, moonwort and the hauntingly beautiful mountain pansy were all common” (Sinker et al 1985)*



# Loss of connectivity



*“These flower-lined lanes, with their sustained splendour from early spring to the end of autumn, are a priceless legacy in the border landscape. We must not lightly let them go” (Sinker, Ecological Flora of the Shropshire Region 1985)*



# Greater butterfly orchid

Indicator of meadow quality





# Churchyards





# Verges





Connected by



Meadow



Road verges



Meadow



